



# IN CONTEXT 3

**SOUTH DUBLIN COUNTY COUNCIL'S**  
PER CENT FOR ART PROGRAMME  
2006-2009



# INCONTEXT **3**

JOHN BYRNE

VIEWS FROM SOUTH DUBLIN COUNTY

SOUTH DUBLIN COUNTY COUNCIL ©2005

VIEWS FROM SOUTH DUBLIN COUNTY  
WAS COMMISSIONED BY

SOUTH DUBLIN COUNTY COUNCIL  
THROUGH IN CONTEXT 3



# INCONTEXT **3**

JOHN BYRNE VIEWS FROM SOUTH DUBLIN COUNTY

PRODUCED BY JOHN BYRNE MUSIC BY JUSTIN CARROLL

DVD VIDEO / PAL REGION-FREE



# CONTENTS

- 3** INTRODUCTION AND OBJECTIVES
- 5** CONTEXT: SOUTH DUBLIN COUNTY
- 9** COMMISSIONING STRANDS + FUNDING
- 11** RESIDENCY COMMISSION OPPORTUNITIES
- 17** ROADS COMMISSION OPPORTUNITY
- 23** MEDIATION COMMISSION OPPORTUNITY
- 27** EVALUATION OPPORTUNITY
- 31** CONTACTS + ADDITIONAL INFORMATION





*'The true issue is not to make beautiful cities or well-managed cities, it is to make a work of life. The rest is a by-product.'*

## INTRODUCING IN CONTEXT 3

*In Context 3* is South Dublin County Council's *Per Cent for Art* programme for 2006-2009. It builds on the principles underpinning and learnings gained from *In Context 1 & 2* and sees an on-going commitment by South Dublin County Council, Ireland, to sustainable public art projects which support artistic ambition (in all art disciplines) and an active engagement with context, situation, community and place. The distinguishing feature of *In Context 3*'s programme of commissions is its emphasis on TIME enabling artists to work through and explore ideas, and to realise projects within a supportive environment.

*In Context 3* is informed by the Department of Arts, Sport and Tourism's *General National Guidelines for delivery of Per Cent for Art Schemes*, published in 2004 ref: [www.publicart.ie](http://www.publicart.ie)

### OBJECTIVES

- > To invest in a *Per Cent for Art* programme that affords TIME, within a supportive environment, for artists (in all art disciplines) to engage with invention and to respond with imagination to the dynamics of the context – South Dublin County.
- > To support artistic ambition, allowing for radical approaches that are relevant to the here and now.
- > To position the relationship between art and context at the focus of creative thinking and to support fluid interchanges between artists, community and place.
- > To support the artist in the realisation of artworks/projects/events/outcomes in any art form discipline or interdisciplinary practices.
- > To value artistic process, research, development, experimentation and connection, with a particular commitment to how the process leads to and shapes outcomes.
- > To enable the community to become more familiar with and involved in the creative and artistic process; to relate to themselves and their environment in new and more meaningful ways and to explore new aspects of their identity.



## CONTEXT: SOUTH DUBLIN COUNTY

URBAN HERE IS SITED IN AN ALMOST RURAL CONTEXT. IT IS NEITHER COUNTRY NOR CITY BUT A PLACE WHERE NATURE AND CULTURE VISIBLY COLLIDE... WEST OF CITY MORE THAN SOUTH OF CITY, IT MIGHT HAVE BEEN CALLED WEST DUBLIN. IT COULD NEVER HAVE BEEN CALLED WEST DUBLIN: SOUTH HAS AN ALTOGETHER DIFFERENT RING ABOUT IT. <sup>2</sup>

South Dublin County lies about 10 miles southwest of Ireland's capital city, Dublin. Sustained at heart by the new technology-led economy, the county is a suburban landscape covering an area of 222.74 Sq. Kilometres. Within its physical boundary are the towns of Tallaght, Clondalkin, Lucan, Palmerstown, Rathfarnham, Terenure and Templeogue. There are also the rural villages of Brittas, Newcastle, Rathcoole and Saggart and a well developed master plan for a new town in Adamstown, near Lucan.

The current estimated population is 247,900, with those under 25 making up about 40% of this figure. Like other urban centres in Ireland, South Dublin County is experiencing an increase in the numbers of new residents, foreign immigrants and a growing multicultural sector.

Tallaght is the county's main centre, with services, shopping, residential and cultural amenities. It emerges as 'edge city', long after the building of major housing schemes relocating inner city dwellers in the 1960's, '70's and '80s. These new communities surrounding Tallaght village were, in the early days, geographically and socially quite isolated, but with the development of Tallaght as a Town Centre in the 1990's and with the LUAS<sup>3</sup> now up and running, there is greater connection between South Dublin County and Dublin City Centre.

South Dublin County Council is one of three Dublin local authorities established in the 1990's. South Dublin County Development Board, which was established in 2002, adopted a ten-year vision (2002-2012) entitled *South Dublin: a place for people*.<sup>4</sup> This document emphasises an integrated approach for quality social, economic and cultural development, putting peoples' lives – those who live, work and visit South Dublin County – at its crux. Its spirit is fresh and it values new ideas, creativity, innovation, new technologies, enterprise and green policies.

For this nascent county and within its thriving and hybrid landscape, identity emerges as a major concern for both the local authority and the community. Accepting that identity is not fixed, but fluid, complex and mutable, one might ask how South Dublin County can stake a claim for itself, make itself legible, differentiate itself from Dublin City and the other Dublin counties, its hinterland and indeed the rest of the country?

What role does public art play within this context – for the artist, the people and the place? How can the artist tune into the myriad rhythms of the physical, social, economic, psychological and continually changing dynamic present here?

A DVD by artist John Byrne entitled 'Views from South Dublin County' accompanies this briefing document and further illustrates the context of the *In Context 3* commissions.

*'The production of the DVD, 'Views from South Dublin County', is very much an outsider's view or impression of an expanding urban area. It's a snapshot of the places and people that make up South Dublin County in 2005 as it goes through great upheaval and change. It's about a place with many identities, but looking for a new sense of place, in what is still a relatively new Dublin County.'*

John Byrne







## COMMISSIONING STRANDS

*In Context 3* is comprised of three commissioning strands:

- > RESIDENCIES
- > ROADS
- > MEDIATION

Further commissions may be awarded, should additional funds become available, during the timeframe of the programme. An independent evaluation of *In Context 3* will also be contracted (see page 27).



## FUNDING

*In Context 3* is funded through the *Per Cent for Art Scheme* which is administered by Irish government departments with capital construction budgets. Under this scheme, 1% of capital construction project funding, subject to specified limitations, can be granted to finance art projects (ref: *General National Guidelines for delivery of Per Cent for Art Schemes, 2004*).

It is estimated that a budget in excess of €1.1m is available to *In Context 3* under the Department of Environment, Heritage and Local Government's and the National Roads Authority's *Per Cent for Art Schemes*. This sum is made up of *Per Cent for Art* monies generated by the building of new housing and by capital developments being undertaken through environmental schemes (water, sewerage and waste) and roads projects.



*'Festina lente, make haste slowly.'* <sup>5</sup>

## RESIDENCY COMMISSION OPPORTUNITIES

The Residency programme is established as the main focus for *In Context 3*. Central to this approach is South Dublin County Council's ambition to invest in an artist's TIME, enabling him/her to get to know the place and its people and to support all kinds of connections between the artist and the context. It is hoped that the residencies will allow artists to have a deeper experience and connection than is usually possible in such contexts, and that this might lead to more meaningful and worthwhile outcomes and perhaps to unanticipated forms of knowledge and expression.

### ELIGIBILITY

The Residencies are open to:

- > All practicing artists in any art form or discipline.
- > Interdisciplinary teams: including artists of different disciplines, as well as teams of non-arts professionals / others, led by artist(s).
- > Curators in any art form discipline whose work involves close collaboration with artist(s).

### STRUCTURE

- > There will be five residencies.
- > Each of the five residencies will be located within one of the following geographic areas in South Dublin County:
  - CLONDALKIN • LUCAN • TALLAGHT CENTRAL / TERENCE / RATHFARNHAM • TALLAGHT SOUTH X 2While these areas contain most of the new capital developments under the Per Cent for Art Scheme, artists will not be bound to a specific site or scheme.
- > Resident artists will be free to work with others from elsewhere in the county, or to make reference to other sites, resources or locations, both within and outside of the county.

### OBJECTIVES

Please refer to page 3 for Programme Objectives.



## TIMESCALE

Residencies are for a two-year period.



## EXPECTATIONS

The Residency programme is established without seeking any pre-ordained outcomes. By this we mean that the artists will not be required to specify an actual end 'product' at the outset.

**There is, however, an expectation that resident artists will:**

Be working towards a single end work, event /publication / intervention / performance / product etc.

**OR**

Complete a series of projects throughout the course of the residency.

**OR**

Instigate a series of mini projects that lead to an end event/outcome.

- > Resident artists will not be expected to live in the county, but will be expected to be in regular contact, making regular visits and creatively interacting with people and place.
- > Resident artists will not be expected to work with each other, but they may form a support to one another, sharing information and giving informal feedback.
- > Resident artists will have an opportunity to contribute to the mediation of *In Context 3*.
- > Resident artists will be expected to contribute to the formal evaluation of *In Context 3*.
- > While resident artists may undertake other work throughout the two-year period, it is expected that the residency will be a primary focus of their work.

## SUPPORTS

Resident artists will be supported by South Dublin County Council's Public Art Coordinator. The Council is committed to assisting artists, as far as possible, with the range of supports required for undertaking the residency commissions. They will have access to local authority services, knowledge, information, facilities and networks.

## WEBSITE

A website has been created for *In Context 3*. It will provide updated information on artists' work at different stages throughout the process. It may also be used as a medium for artists' work. Artists will be expected to contribute material on their projects for the website.

Website address: <http://incontext.southdublin.ie>

## BUDGET

Each residency will be awarded fee of **€30,000 per annum**. A separate budget is available for:

- > Research, development and experimentation
- > Artistic outcomes – works / interventions / performances / publications etc.
- > Promotion
- > Documentation



## APPLICATION PROCEDURE

### Open Submission Competition. Submission Requirements:

- > **Curriculum Vitae** of no more than two typed A4 pages and to include two referees.
- > **Written Response** of between one and three typed A4 pages in which applicants should consider:
  - Why the residency appeals to you.
  - How it might relate to your current artistic practice and/or allow you another/new experience.
  - Initial thoughts and ideas for the development of the residency.
  - Initial thoughts on the structure of the residency.
- > **Supporting Documentation** to include examples of work and criticism such as audio, CD, DVD, tapes, scores, catalogues, texts, publications, photographs, slides, reviews etc. In the case of emerging artists who have less 'performative experience', a short piece (of no more than 500 words) by a referee on the 'artistic potential' of the applicant should be included.

Please note that artists are not expected to have fully developed ideas or have an in-depth knowledge of the county.

## SELECTION PROCESS

A system of peer assessment will be employed to advise a selection panel in making a shortlist of artists to invite for interview. The selection panel will comprise of professional artists, arts administrators, and representatives from South Dublin County Council. The names of the selection panel will be published on the *In Context 3* website prior to the selection process.





## CRITERIA FOR SELECTION

- > Imagination of proposal/concepts.
- > Potential within the proposal to make creative connections to context and situation.
- > Artistic ambition/potential of artist.
- > Demonstration of openness to the artistic process – exploration, enquiry and adventure.
- > Meaning / impact of the commission for the artist and his/her practice.
- > Ability to self-manage.

**Closing date for receipt of submissions: 5pm Friday 10 March 2006**

**Please send to: Caroline Orr, Public Art Coordinator, Residency Commission In Context 3, South Dublin County Council, Tallaght, Dublin 24, Ireland.**

*Please note that emailed, faxed or late submissions will not be accepted.*

*Label all enclosures with your name*

*Include an addressed envelope for return of all materials*

*Include an e-mail address and/or telephone contact*

*Collection of larger submissions to be arranged by applicant.*

## CONTRACT

A contract will be drawn up and agreed to between South Dublin County Council and the appointees to the residency commissions.





*Roads no longer merely lead to places,  
they are places.<sup>6</sup>*

## ROADS COMMISSION OPPORTUNITY

*Per Cent for Art* funding arising from two capital construction road schemes - the Grange Castle Road and the N7 Naas Road improvement - will be pooled to provide a budget of €97,500 for a single commission. The commission takes the subject of the road and offers an opportunity for artists either on their own or in collaboration with others to consider ideas relating to “the road” and to make a proposal for a site-based permanent visual artwork.

The commissioner is seeking innovative proposals and is open to the unexpected.

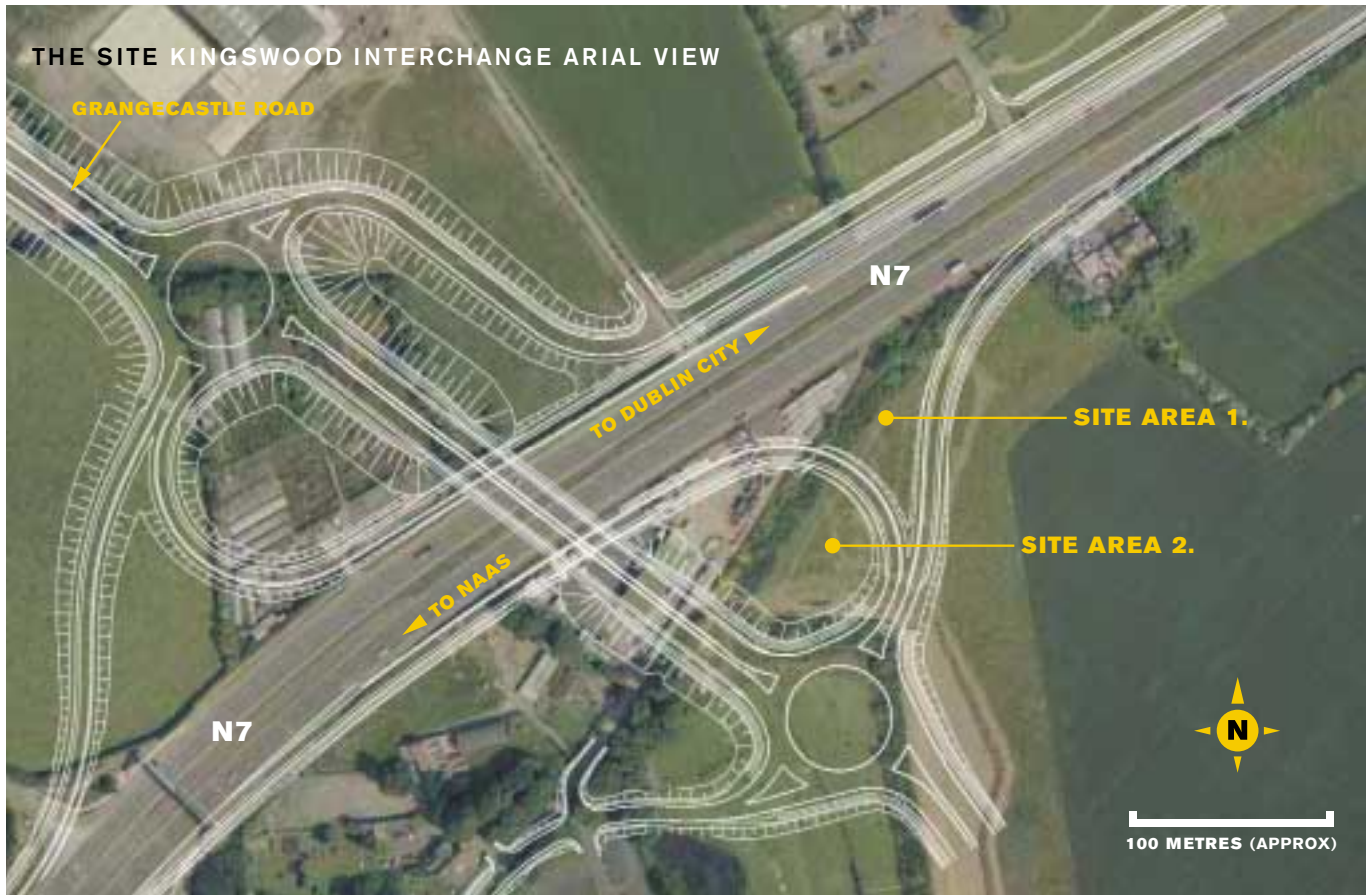
### THE SITE

The site for this commission is at the Kingswood interchange where the N7 and Grange Castle Road intersect within South Dublin County. This site comprises of two areas (detailed overleaf). Artists are invited to consider either one or both these areas and to propose location(s) for art work in their submission.

An information/site meeting will be held on **7 February 2006**. Artists wishing to attend this meeting should contact the Public Art Coordinator for further details.



THE SITE KINGSWOOD INTERCHANGE ARIAL VIEW



## THE SITE KINGSWOOD INTERCHANGE, SOUTH DUBLIN COUNTY



1. View of site looking towards overbridge
2. View across N7 towards site
3. View of site from overbridge



## GRANGE CASTLE ROAD AND N7 NAAS ROAD CAPITAL CONSTRUCTION PROJECTS

The Grange Castle road capital construction project is of strategic importance to South Dublin County in terms of economic development, providing access to the Adamstown Strategic Development Zone (SDZ). This road will also, when complete, provide an important and long-awaited link between different communities within the County, namely Tallaght, Clondalkin and Lucan. It will contain 5 roundabouts, 2 over-bridges, (one over the Grand Canal, the other over the Dublin - Kildare railway line) and a grade-separated interchange at Kingswood, where it intersects with the N7 Naas Road.

The N7 Naas Road capital improvement project seeks to increase vehicular capacity on the N7, which is one of the principal routes connecting Dublin with the South and South West. It is one of the most used roads in the country and carries approximately 65,000 vehicles per day. The improvement scheme provides for construction of a third lane in both directions for a distance of 5.4km and includes a grade-separated interchange at Blackchurch connecting via a new link road to the Athgoe Road. In addition, two remaining sets of traffic lights, which cause traffic to back-up on the outbound route, will be removed.

## APPLICATION PROCEDURE: TWO-STAGE COMPETITION

### STAGE ONE Open Competition – Submission Requirements

- > **Curriculum Vitae**, of no more than two typed A4 pages and to include two referees.
- > **Concept**, between one and two typed A4 pages, outlining the proposed concept and including information on proposed medium/materials and costings.
- > **Visual material**, to include sketches, drawings, maquettes or other visual material that may assist in illustrating the proposal.
- > **Supporting documents**, to include examples of previous work and criticism such as publications, DVDs, CDs, slides, photographs, reviews etc.

### STAGE TWO

Between two and six artists will be invited to present a more developed proposal for the second stage. A period of 12 weeks and a fee of €1000 will be given to artists to develop their ideas in this context.

## SELECTION PANEL

The selection panel for this commission will comprise of professional artists, arts administrators, and representatives from South Dublin County Council. Depending on the numbers of submissions received a peer assessment stage may be employed as part of the selection process. The names of the selection panel will be published on the *In Context 3* website prior to the selection process.

## CRITERIA FOR SELECTION

- > Imagination of proposal/concepts.
- > Artistic ambition and potential for the “unexpected”.
- > Ability to deliver.
- > Relevance to the present and potential to hold meaning/visual impact in the longer-term.

**Closing date for receipt of submissions: 5pm Friday 10 March 2006**

**Please send to: Caroline Orr, Public Art Coordinator, Roads Commission In Context 3, South Dublin County Council, Tallaght, Dublin 24, Ireland.**

*Please note that emailed, faxed or late submissions will not be accepted.*

*Label all enclosures with your name*

*Include an addressed envelope for return of all materials*

*Include an e-mail address and/or telephone contact*

*Collection of larger submissions to be arranged by applicant.*

## CONTRACT

A contract will be drawn up and agreed to between South Dublin County Council and the appointee(s) to the roads commission.







## MEDIATION COMMISSION OPPORTUNITY

Inherent to the success of *In Context 3* is the way in which creative connections between artists, art and the public are made, communicated and comprehended. The mediation commission forms an integral part of the programme, providing another level of support to commissioned artists.

Through this commission it is hoped to create an active dialogue between the artist, the art and the community in and for which the art work is made, thereby allowing the possibility for greater understanding and interaction between the various 'players' involved. It is hoped also that the mediation process might address a broader public than the immediate/local audience, thus extending the scope and impact of *In Context 3* as a unique and innovative programme of public art.

### EXPECTATIONS

It is expected that the person(s) awarded the mediation commission will:

- > Develop, structure and manage a mediation programme which is informed by and gives consideration to creative and new ways of facilitating communication, connection and interaction between the various commissions (throughout the process as well as the completed projects) and the local communities.
- > Partake in the formal evaluation of *In Context 3*.
- > Contribute to *In Context 3* website updates.

### ELIGIBILITY

Artists, arts facilitators/educators, curators or others who may have interest and/or experience in creating links between artists, art, audiences and context. Applications may be made by individuals or a team.



## TIMESCALE

It is intended that the mediation commission will be awarded alongside the other *In Context 3* commissions and will last for a two-year period.

## SUPPORTS

The person(s) awarded the mediation commission will be supported by South Dublin County Council's Public Art Coordinator who will assist in accessing local authority services and/or other relevant local information, services, knowledge or networks. The *In Context 3* website will be available to the ongoing mediation of the programme.

## BUDGET

A fee of €35,000 over a two-year period will be awarded for the mediation of *In Context 3*. An additional operating budget is available to support and document the overall programme of mediation.

## APPLICATION PROCEDURE

Applicants are invited to submit:

Curriculum Vitae, of no more than two typed A4 pages and to include two referees.

Between one and three typed A4 pages providing:

- > A statement of interest
- > A summary proposal of your thoughts and ideas for the mediation of *In Context 3*

Supporting documents/material relating to previous work in this area.



## SELECTION PROCESS

Applicants will be shortlisted for interview on the basis of their submission.

## CRITERIA FOR SELECTION

- > Demonstration of clarity of thought, imagination and creative thinking.
- > Ability to deliver.
- > Ability to communicate and work well with others.

**Closing date for receipt of submissions: 5pm Friday 10 March 2006**

**Please send to: Caroline Orr, Public Art Coordinator, Mediation Commission In Context 3, South Dublin County Council, Tallaght, Dublin 24, Ireland.**

*Please note that emailed, faxed or late submissions will not be accepted.*

*Label all enclosures with your name*

*Include an addressed envelope for return of all materials*

*Include an e-mail address and/or telephone contact*

## CONTRACT

A contract will be drawn up and agreed to between South Dublin County Council and the appointee(s) to the mediation commission.





## EVALUATION OPPORTUNITY

South Dublin County Council wishes to commission an independent evaluation of *In Context 3*. It is intended that this evaluation, which will be carried out over the course of the two-year programme, will provide both a valuable account and a useful analysis of the work undertaken through *In Context 3*

### ROLE AND BRIEF OF THE EVALUATION

It is envisaged that the evaluation will cover all aspects of the programme including the residency commissions, the roads commission, the mediation commission, and the overall management of the programme.

### EXPECTATIONS

It is expected that the evaluator(s) will:

- > Evaluate the programme in terms of its established objectives (see page 3).
- > Document the overall progress of *In Context 3* including the processes involved and the outcomes arising.
- > Produce a final evaluation report that articulates the learnings gained and makes recommendations for the commissioning of similar public art projects in the future in South Dublin County.

### ELIGIBILITY

Applications may be made by an individual or a team.



## SUPPORTS

The person(s) carrying out the evaluation will be supported by South Dublin County Council's Public Art Coordinator with regard to information, contacts and other supports that may be needed. The Council will undertake to publish the final evaluation report.

## BUDGET

A fee of €30,000 over a two year period will be awarded for the evaluation of *In Context 3*.

## APPLICATION PROCEDURE

Applicants are invited to submit:

- > **Curriculum Vitae**, of no more than two typed A4 pages and to include two referees.
- > **A Statement of Interest**, of no more than two typed A4 pages including a proposed approach to the evaluation of *In Context 3*, with particular reference to methodology and structure.
- > **Outline of previous evaluation work** of no more than two typed A4 pages, and accompanied by supporting material (e.g. copies of evaluations undertaken).



## SELECTION PROCESS

Applicants will be shortlisted for interview on the basis of their submission.

## CRITERIA FOR SELECTION

- > Demonstrated ability in the area of evaluation.
- > Working knowledge of the arts in general and socially engaged arts practice in particular.
- > Ability to engage effectively with a range of individuals.
- > Clarity of thought, analysis and expression.
- > Ability to deliver.

**Closing date for receipt of submissions: 5pm Friday 10 March 2006**

**Please send to: Caroline Orr, Public Art Coordinator, Evaluation In Context 3, South Dublin County Council, Tallaght, Dublin 24, Ireland.**

*Please note that emailed, faxed or late submissions will not be accepted.*

*Label all enclosures with your name*

*Include an addressed envelope for return of all materials*

*Include an e-mail address and/or telephone contact*

## CONTRACT

A contract will be drawn up and agreed to between South Dublin County Council and the appointee(s) to the evaluator position.









## CONTACT AND SUBMISSIONS

**Caroline Orr, Public Art Coordinator, In Context 3**

**South Dublin County Council, Tallaght, Dublin 24, Ireland.**

**T + 353 [0]1 414 9000 F + 353 [0]1 414 9106 E [corr@sdblincoco.ie](mailto:corr@sdblincoco.ie)**

## WEBSITE

A website has been created for *In Context 3*. It will provide updated information on *In Context 3* artists' work at different stages throughout the creative process. It may also be used as a medium for artists' work. <http://incontext.southdublin.ie>

## PUBLICATION

A publication documenting *In Context 3* with images and critical texts will be published by South Dublin County Council on completion of the programme.

## FREEDOM OF INFORMATION

South Dublin County Council is subject to Freedom of Information (FOI) legislation. If there is any information included in your submission that you would prefer to remain confidential please indicate what it is and state why you consider it sensitive material. Should South Dublin County Council receive a Freedom of Information request with regard to this material you will be consulted before a decision is made about its release. If a decision is made to release said information you have the right to appeal this decision to the Information Commissioner. If you do not indicate any information in your submission that you would prefer to remain confidential and why, South Dublin County Council would likely allow its release on receipt of a Freedom of Information request.

## DISCLAIMER

South Dublin County Council retains the right to not award a commission.

While all reasonable care will be taken, South Dublin County Council bears no responsibility for any loss or damage to materials submitted.

### **IN CONTEXT 3 ARTISTIC DIRECTORS**

**Sarah Finlay**

**Clíodhna Shaffrey**

### **SOUTH DUBLIN COUNTY COUNCIL'S PUBLIC ART STEERING COMMITTEE**

**Michael Coleman** Senior Executive Officer, Community Dept, South Dublin County Council

**Paddy de Roe** Senior Architect, South Dublin County Council

**Fionnula Lennon** Project Planner, South Dublin County Council

**Mick McCartan** Senior Staff Officer, Housing Dept. South Dublin County Council

**Aileen McMahon** Senior Staff Officer, Roads Dept. South Dublin County Council

**Ruairí Ó Cuiv** Arts Adviser

**Caroline Orr** Public Art Coordinator, South Dublin County Council

**Orla Scannell** Arts Officer, South Dublin County Council

**Brian Sheehan** Senior Executive Parks Superintendent, South Dublin County Council

**Teresa Walsh** County Librarian, South Dublin County Council

### **ACKNOWLEDGEMENTS**

**Text** Sarah Finlay and Clíodhna Shaffrey

**Images** John Byrne, *Views from South Dublin County*, DVD stills

**Design** Brian O'Connor

**Print** Plus Print

© **South Dublin County Council 2006**



## QUOTATIONS + TERMINOLOGY

1. Raymond Ledrut, "Speech and the Silence of the City" in *The City and the Sign: An Introduction to Urban Semiotics*, ed. M. Gottdiener and Alexandros Ph. Lagopoulos, New York, Columbia University Press, 1986
2. *In Context 3: An Approach to commissioning for South Dublin County Council*, S. Finlay and C. Shaffrey, 2005
3. LUAS is the new electric tram system connecting Dublin City and the outlying suburban centres.
4. cf. [www.southdublin.ie](http://www.southdublin.ie)
5. Italo Calvino, *Six Memos for the Next Millenium*, New York, Vintage, 1988
6. John Brinckerhoff Jackson, *A Sense of Place, A Sense of Time*, New Haven/London, Yale University Press, 1994

# IN CONTEXT **3**

**SOUTH DUBLIN COUNTY COUNCIL'S PER CENT FOR ART PROGRAMME 2006-2009**

**South Dublin County Council, Tallaght, Dublin 24, Ireland.**

**T + 353 [0]1 414 9000 F + 353 [0]1 414 9106 E [corr@sdublincoco.ie](mailto:corr@sdublincoco.ie) W <http://incontext.southdublin.ie>**